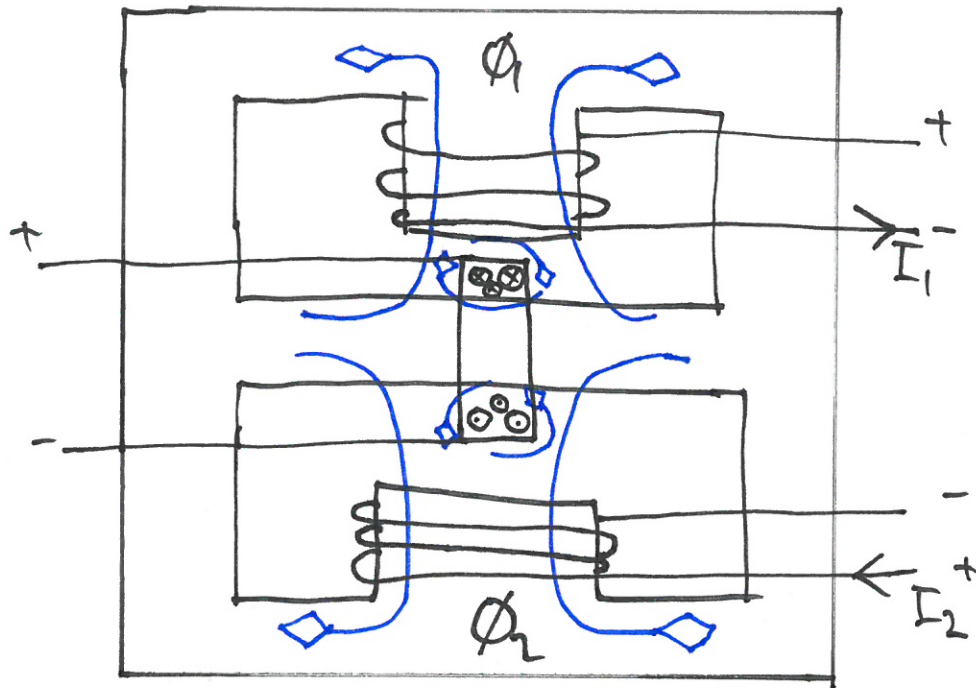


A 5.4) a)



b) $N=100$, $I=0.060 \text{ A}$, $B=1.0 \frac{\text{Vs}}{\text{m}^2}$
 $l=0.030 \text{ m}$

ETT bidrag till kraften i spolens vardera ände ger

$$F = 2 \cdot N \cdot B \cdot I \cdot l = 2 \cdot 100 \cdot 1 \cdot 0.06 \cdot 0.03 = 0.36 \text{ N}$$

$$F = 0.36 \text{ N}$$