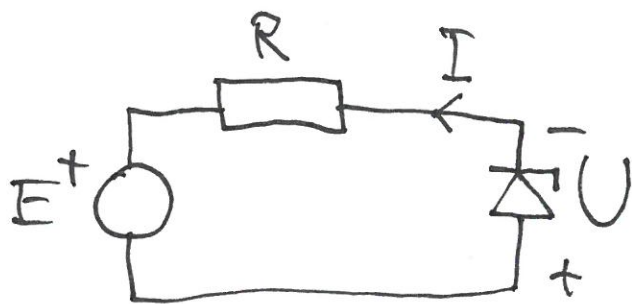


3-16)



$$U = -4 \text{ V}$$

$$I = -4 \text{ mA}$$

$$E = 6 \text{ V}$$

KVL:

$$E + R \cdot I + U = 0$$

$$\Leftrightarrow R = \frac{-E - U}{I} = \frac{-6 + 4}{-4 \text{ m}} = 500 \Omega$$

$$R = 500 \Omega$$