

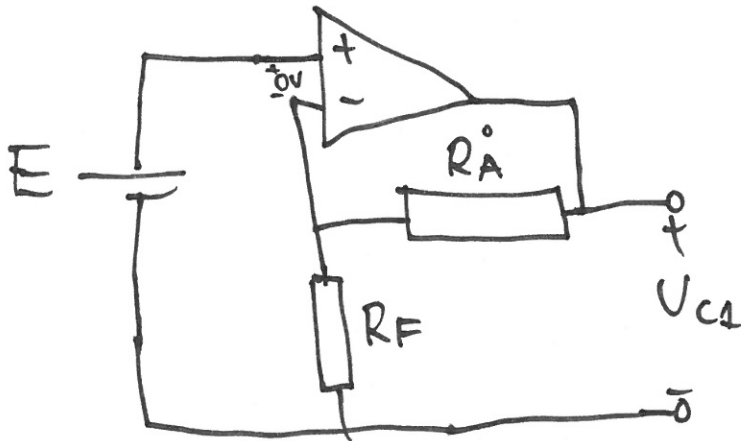
F 1.7) Lösning med superposition:

Bidrag från E

$$R_F = 10k\Omega$$

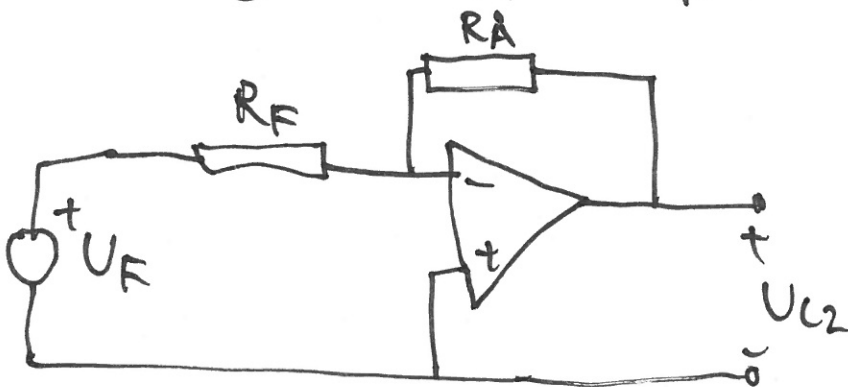
$$R_A = 20k\Omega$$

$$E = 2.0V$$



$$E = \frac{U_{C1} \cdot R_F}{R_A + R_F} \Rightarrow U_{C1} = \frac{R_A + R_F}{R_F} \cdot E = \frac{20k + 10k}{10k} \cdot E = 6V$$

Bidrag från  $U_F$



$$U_{C2} = -\frac{R_A}{R_F} \cdot U_F = -\frac{20k}{10k} \cdot U_F = -2 \cdot U_F$$

$$U_C = U_{C1} + U_{C2} = 6 - 2U_F$$

